

REGISTRATION PACKET



CSLN 2010 10TH ANNUAL LEADERSHIP CONFERENCE

*“Keeping our Commitment to
Flexible and Tailored Supports in Changing Times”*



Thursday & Friday - April 15th & 16th, 2010

Early Registration Deadline - March 5th, 2010

HOLIDAY INN ON THE BAY - SAN DIEGO, CA

Who Should Attend the 2010 Leadership Conference?

SLS and ILS Providers including Single Household Vendors • Regional Center Representatives • Individuals receiving SLS services
Families interested in SLS or ILS • Stakeholders interested in living options • Anyone starting an SLS agency

www.supportedliving.com

Conference Overview

WEDNESDAY APRIL 14, 2010

5:00pm- 7:00pm	Early Registration and Packet Pick-up
----------------	---------------------------------------

THURSDAY APRIL 15, 2010

8:00am- 9:00am	Registration and Continental Breakfast
8:00am- 3:00pm	Exhibitors
9:00am- 9:30am	Welcome
9:30am-10:15am	General Session: Conference Tone Setter
10:30am-12:00pm	Break-out Sessions
12:15pm-1:15pm	Lunch and optional Table Topic Discussions
1:30pm- 3:15pm	Break-out Sessions
3:15pm-3:30pm	Break
3:30pm-5:00pm	Break-out Sessions
5:00pm-7:00pm	Complimentary Hospitality Reception and Social Hour <i>Come join us for networking, socializing and fun!</i>

FRIDAY APRIL 16, 2010

8:15am-9:30am	Continental Breakfast and optional Table Topic Discussions
9:30am-10:00am	General Session: Understanding the UN Convention on the Rights of Persons with Disabilities by Mark Starford (BRC) and Carol Risley (DDS)
10:15am-11:45am	Break-out Sessions
12:00pm-1:00pm	Lunch and Keynote by Terri Delgadillo, DDS Director
1:15pm-3:15pm	SLS Circle of Influence General Session
3:15pm-3:30pm	Conference Wrap-up

CSLN 2009 SCORECARD

CSLN Network Leaders Oppose Cuts to SLS Services	CSLN Governmental Affairs Committee Co-Chairs Jacquie Dillard-Foss and Carol McKinney worked fiercely throughout the year to preserve SLS services in the face of massive state cuts to services to people with developmental disabilities. Drastic changes to SLS services proposed at the outset by the Department were replaced with less harsh changes to preserve the integrity of SLS services.
CSLN Training Committee Presents Regional Training Forums	Four Regional Training Forums were presented throughout California during the Fall of 2009. Technical advice and updates on current budgetary issues and regulatory changes were presented, while all shared resources and information.
CSLN Leaders Hold Quarterly Meetings with DDS Director	The leaders of the California Supported Living Network continued to meet with DDS Director Terri Delgadillo on a quarterly basis. These meetings have presented a unique opportunity for the Network to provide input to the Department and to shape SLS policy. As the California State Budget continues to cut services to people with developmental disabilities, these positive meetings continued to serve our need to provide input and cost-effective ideas to the Department, while allowing the Department to "float" ideas and to receive experiential data from our membership.
CSLN Presents the 9th Annual Leadership Conference	Over 100 participants attended the 9th Annual Leadership Conference with keynote speaker Dr. Ruth Meyers. Break-out sessions included sessions on supported living best practices, cost-effective ideas for the business aspect of providing supported living, and, of course, our traditional "State of the State" panel focusing on where we have come in the past year, and where we are going.
ILS Providers Welcomed into the Network	This year CSLN extended an invitation for ILS providers to join with CSLN, acknowledging our common mission to provide services and supports to individuals so that they can live in homes of their own. We have much in common and much to share.

Conference Information

Conference Theme

As SLS and ILS providers, we know what it means to be "flexible and tailored" and because we believe in quality services, we are always looking for ways to provide even better supports. The 2010 Leadership conference will focus on innovation and best practices that empower providers to be the ultimate example of flexible and tailored. We have lined up speakers and sessions that will give you real tools you can use right away as well as thoughts to stimulate your further quest for progress in community supported living. The past and current year's crisis in state funding has given new meaning to flexible, so CSLN has worked hard to bring you a valuable conference at a very reasonable price. We have also increased the number of breakout sessions available offering you even more choices.

Conference Information

● GENERAL SESSIONS

For the first time in CSLN Leadership Conference history, a person receiving SLS services will present our conference tone-setting general session on Thursday April 15, 2010. CSLN is proud to welcome Michael Long, representing the thousands of people receiving SLS and ILS services in California. Michael Long has served as People First President, Butte County Board of Supervisor's Area Board 2 and NISH board member and was employed by DDS as a Consumer Coordinator. Michael has developed a public speaking career and has also written a book titled "If the Dreams are Big Enough the Facts Don't Count".

Mark Starford (BRC) and Carol Risley (DDS) will present Understanding the UN Convention on the Rights of Persons with Disabilities on Friday April 16, 2010. We each have human rights because we are human. Human rights are based on dignity, respect, and are universal. The United Nations Convention on the Rights of Persons with Disabilities (CRPD) ensures the rights of 650 million people with disabilities around the world. It is important for all people to learn about the CRPD. The DDS Consumer Advisory Committee (CAC) collaborated with the Board Resource Center and United States International Council on Disabilities (USICD) to develop an easy to understand booklet and DVD that describes human rights and the power of CRPD. The CAC hosted a human rights forum with Kathy Guernsey from USICD in November to outline human rights, the importance of the treaty and how it applies to everyone. The CAC developed a plain language booklet and DVD of the Forum that outlines the importance of rights, leadership and why the treaty is important. This session will provide an overview of human rights and the benefits of the treaty.

We have again invited DDS Director, Terri Delgadillo to present a luncheon keynote on Friday, April 16, 2010. Director Delgadillo has graciously accepted our invitation but tentatively confirmed based on the status of the California State Budget. We received very positive feedback after Director Delgadillo's 2008 luncheon keynote and we are thrilled to have her join us again this year.

● BREAK-OUT SESSIONS

Over the years, conference attendee feedback has revealed that there are three main areas of interest among CSLN members and SLS stakeholders. We are again offering three strands to address these areas: Best Practices, Business Supports, and Staff Development. You will find descriptions of the 2010 break-out sessions in this brochure.

● EXHIBITORS

CSLN has invited a variety of vendors and organizations to participate and exhibit on April 15, 2010 from 8:00am to 3:00pm. Here you will find resources and new ideas to take back that directly impact your work and life.

● CONFERENCE REGISTRATION

Conference registrations are being accepted online, by fax and U.S. mail. CSLN members receive a discounted conference rate. Your full conference registration fee provides access to the General Sessions, Break-out sessions, Morning refreshments, Lunches, Vendor Exhibits and the Hospitality Reception. The registration form and instructions are available in this brochure and online at www.supportedliving.com. Conference registration fees increase after March 5, 2010 so be sure to get registered before then! Conference fees can be submitted online or checks made payable to CSLN and mailed to PO Box 151293 San Diego, CA 92175. Watch your email or mail as we will send you a confirmation with additional information soon after we receive your registration.

● CANCELLATION/REFUND POLICY

Cancellations must be in writing. All cancellations will be subject to a 50% administrative fee. Cancellations after March 22, 2010 cannot be refunded (including "no-shows") and no refunds will be given on-site. Substitutions are welcome with advance notice. Mail cancellations to CSLN PO Box 151293 San Diego, CA 92175. All refunds are issued in the form of a check. We do not apply refunds to credit cards. Please allow 4-6 weeks for refund check.

● CONTACT INFORMATION

GENERAL CONFERENCE **Melanie Bazile** melanieb@stepagency.com

(916)679-1555 ext 108 Voice, (916)679-1530 Fax

CSLN MEMBERSHIP **Jennifer Lengyel** Jenlen@comcast.net

(408)293-5002 Voice, (408)293-5015 Fax

CONFERENCE REGISTRATION **Deb Callahan** deb@networx-sls.com

(619)501-5401 Voice, (619)460-5604 Fax

EXHIBIT & SPONSORSHIP **Joan Schmidt** JSchmidt@creativelivingoptions.com

(916)372-2102 Voice, (916)372-2123 Fax

● LOCATION AND RESERVATIONS

We are pleased to have our location for the 2010 Leadership Conference at the Holiday Inn on the Bay in San Diego. All conference events will be held at the Hotel located at 1355 North Harbor Drive San Diego, Ca 92101. **The Holiday Inn San Diego on the Bay hotel** is near shops, restaurants, theaters, museums and sporting venues. The ferry and Downtown Gaslamp Quarter are several attractions within walking distance. Marvel at sunsets over the water from a bay front balcony or on a stroll down the boardwalk across the street. Utilize the **free shuttle** to San Diego Zoo, San Diego Airport, Horton Plaza, Sea Port Village, and the cruise ship terminal. This full-service San Diego hotel on Embarcadero boasts 600 rooms and suites featuring wireless high speed Internet access and superb views of the water and city skyline. Hotel reservations can be made online by visiting <https://resweb.passkey.com/go/sln2010> or by contacting the Holiday Inn on the Bay at 1-888-233-9527 or 619-232-3861. There is also a link from CSLN's website at www.supportedliving.com. A limited number of rooms are available for \$129.00 per night for a City View room, double occupancy and \$159.00 per night for a beautiful Bay View room under the **California Supported Living Network**. Rooms must be booked no later than March 15th, 2010 to receive this special rate!

Break-out Sessions

● **STRESS MANAGEMENT**

Business Supports Strand

Craig Gottwals, Benefits Consultant (State Lic #0E00710)
Liberty Benefit Insurance Services, Inc.

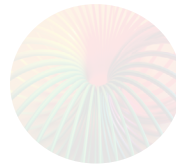
Thursday April 15, 2010

This session discusses the ability to recognize stress and how it impacts you. We will review stress drivers in personal life but emphasize the stress created in the workplace. And lastly this session will discuss several “self help” techniques on how to manage your stress levels.

● **CHARACTER AND COMPETENCY: PRINCIPLE-BASED SERVICES AND SUPPORTS**

Staff Development Strand

Melanie Bazile, Strategies To Empower People



Thursday April 15, 2010

Any organization is only as great as the people connected to it. This three-session strand will explore the concepts of trust and credibility and how developing consistent habits supporting character and competency results in innovative services that are principle-based. Through hands-on exercises and real life scenarios, we will look at the four foundational elements of trust: integrity, intent, capabilities, and results. Flexible and Tailored services honor the 5 Principles of Supported Living. We will discuss the 5 Principles both as a foundation and a desired result. Participants will be challenged to think about the kind of legacy they want to leave and introduce them to some powerful tools to achieve that goal.

● **MOTIVATING EMPLOYEES AND WORKPLACE ETHICS**

Business Supports Strand

Dave and Craig Gottwals, Benefits Consultant (State Lic #0E00710)
Liberty Benefit Insurance Services, Inc.

Thursday April 15, 2010

The first part of this session will provide tips and tactics to motivate your employees to perform at their best. The session will discuss the need for Supervisors and Managers to:

- Recognize that motivators vary from person to person;
- Find out what motivates their employees;
- Use an effective arsenal of motivational techniques to help workers achieve peak performance; *and*
- Encourage employees to reach their highest potential.

This second part of this session is to reinforce the importance of ethical conduct on the job and appreciate why a high standard of ethics is important. This session will discuss topics that include:

- Identifying ethical problems in the workplace
- Understanding legal requirements
- Making ethical decisions
- Recognizing and carrying out ethical responsibilities



**Don't miss the luncheon Keynote speaker
Terri Delgadillo, DDS Director *
on April 16th, 12:00pm - 1:00pm**

** scheduled to appear*

“Keeping our Commitment to Flexible and Tailored Supports in Changing Times”

Break-out Sessions

THE SPECTRUM OF FLEXIBLE AND TAILORED

Best Practices Strand

Anne M. Donnellan PhD.

Thursday April 15, 2010

Professor Anne Donnellan will discuss the role of movement/perceptual difficulties in the lives of individuals with the label of autism and other severe challenges. The emphasis will be on finding ways to accommodate and support people toward community presence and participation. Accommodations are not meant to “fix” the person. They are flexible and tailored supports to allow the person to temporarily get around a movement difference.

ADVOCATING FOR LIFE QUALITY

Best Practices Strand

Diana Pastora-Carson

Thursday April 15, 2010

“Esteeming each person as vastly valuable seeds their peaceful self.”

(Peyton Goddard)

Joaquin’s journey has lead him through the paths of segregated education, harmful medications, repeated institutionalization, and dehumanization. After 40 years of trusting the professionals, cookie cutter behavior interventions and programs, and sacrificing Joaquin’s peaceful existence, he and his family chose the path of supported living, only to find resistance and delays. Share in Joaquin’s journey as shared by his sister, Diana, and realize the importance of family and friends who are willing to speak up for their loved ones. For many people, life quality and peace within are only possible when others are willing to step in and advocate on their behalf.

PERSONAL DECISIONS IN WELLNESS

Business Supports Strand

Craig Gottwals, Benefits Consultant (State Lic #0E00710)
Liberty Benefit Insurance Services, Inc.

Thursday April 15, 2010

A 90 minute jumpstart to losing weight, exercising more, and learning the impacts if we don’t.

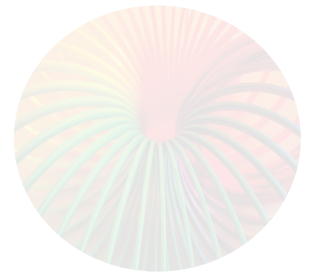
DEVELOPING INFRASTRUCTURES FOR HEALTH AND SAFETY

Best Practices Strand

Donn Kropp, RN, BSN

Thursday April 15, 2010

Donn Kropp, RN, BSN discusses innovative strategies, solutions and tools to meet the dynamic medical needs and challenges that face consumers. Be inspired to incorporate infrastructures that promote greater health and safety.



This brochure, plus updated conference information, can be viewed at:
www.supportedliving.com

“Keeping our Commitment to Flexible and Tailored Supports in Changing Times”

Break-out Sessions

● COMMUNITY RESOURCES

Business Supports Strand

Lisa Barrows, Strategies To Empower People

Paul Wurst, Options in Supported Living

Additional panelist(s) to be determined

Friday April 16, 2010

Accessing and maximizing generic resources is an ever necessary and requested topic at the Leadership Conference. Even though resources can vary by region, just conversing with one another can lead to a dynamic and beneficial discussion. A panel of knowledgeable presenters will discuss systems utilized for IHSS, Housing and other Community Resources and to have you share your systems as well. In this critical time of budget cuts, we as a community coming together to assist one another to be as efficient as possible is one avenue of ensuring those we support continue to receive quality services.

● COMMUNITY STEPS

Best Practices Strand

Mark Starford (BRC)

Additional presenters to be determined

Friday April 16, 2009

Developing community membership involves a systematic effort to increase the number of people with disabilities in community based equal relationships such as neighbors, co-workers, association members, and friends. The challenge of service provider organizations is to assist people to organize and maintain support circles, cooperatives and other associations aimed at creating equal systems of natural support. Creative interaction from service providers and accommodations by employers can facilitate mutu-

ally supportive alliances that enable participation in communities. This session will outline a creative process one agency is taking to increase access in the local community for the people they serve. The process involves exploring community assets, personal interests and agency team members modeling in their own lives to understand the steps from a practical perspective. Core components include learning about natural and community supports, community exploration field trips with team members and developing a business to business relationships. Community STEPS outcomes will be documented for replication in a digital media and booklet publication produced by team members and people served by the agency. Final project will illustrate how participants accessed their local community assets; natural supports, neighborhood exploration, networks and contacts that can lead to job/volunteer opportunities and increased membership.

● CIRCLE OF INFLUENCE GENERAL SESSION

Friday April 16, 2010

Supported Living in California is at a crucial point. It is important that we as an SLS Community focus our efforts on the issues we can influence. We expend a lot of energy on the inequities of service rather than directing our efforts toward pro-activity that will make a difference. This interactive panel will address the concerns of SLS and give concrete examples of how we can really influence the future of Supported Living. The time for action is now!

Exhibitor's Circle

CSLN has invited a variety of vendors and organizations to participate and exhibit on April 15, 2010 from 8:00am to 3:00pm. Here you will find resources and new ideas to take back that directly impact your work and life.

“Keeping our Commitment to Flexible and Tailored Supports in Changing Times”

Conference Registration

CSLN 2010 10TH ANNUAL LEADERSHIP CONFERENCE

"Keeping our Commitment to Flexible & Tailored Supports in Changing Times"

Contact Name _____

Organization _____

Position or Title _____

Services provided (check all that apply) ☐ ILS ☐ SLS ☐ Supported Employment

☐ RC funded Day Service ☐ Other _____

Contact phone _____

Address _____

Email address _____

FEES (Does not include the cost of hotel or travel:

	Before 3/5/10	After 3/5/10	On-Site
Self-Advocate or Family Member			
CSLN Member	\$180	\$230	\$280
Non-Member	\$205	\$255	\$305
Staff Member/Professional w/Agency			
CSLN Member	\$265	\$305	\$345
Non-Member	\$290	\$330	\$370

Attendee Name	Email	Registration Fee
TOTAL REGISTRATION FEES:		

RENEW YOUR CSLN MEMBERSHIP AT WWW.SUPPORTEDLIVING.COM

CONTACT INFORMATION

Questions about conference registration, contact
Deb Callahan, deb@networx-sls.com
or (619) 501-5401.

ABOUT YOUR REGISTRATION FEES

Conference registration includes:

- All conference sessions
- Morning refreshments Thursday and Friday
- Lunch Thursday and Friday
- Hospitality Reception Thursday evening

TO REGISTER FOR CONFERENCE

Fill out one registration form for up to three participants and mail with payment to:

CSLN Attn: Deb Callahan
P.O. Box 151293
San Diego, CA 92175

Make check payable to CSLN
Registration form can also be faxed to

CSLN Attn: Deb Callahan (619) 460-5604

Registration and payment can also be completed
online at www.supportedliving.com

SPECIAL ACCOMMODATIONS:

- ☐ Sign Language Interpreting Services
- ☐ Accommodations for Conference Materials
- ☐ Vegetarian Meals
- ☐ Specially Prepared Food: _____
- _____
- ☐ Other - Please Specify: _____
- _____

Supported



CSLN

Attn: Melanie Bazile
5945 Palm Drive
Carmichael, CA 95608
www.supportedliving.com

TIME SENSITIVE MATERIAL

Early Registration Deadline March 5th, 2010

Early registration saves money!

CSLN 2010 10TH ANNUAL LEADERSHIP CONFERENCE

Hotel Accomodations
Available!

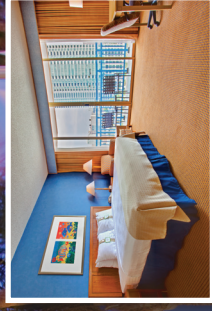
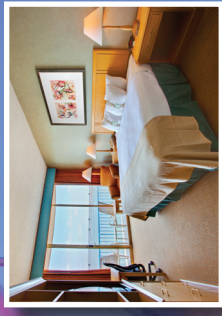
ROOM RATES:

\$129/night for a City View room, double occupancy

\$159/night for a beautiful Bay View room, double occupancy

Call 1-888-233-9527 to make room reservations
under the California Supported Living Network.

Rooms must be booked no later than
March 15th, 2010 to receive this special rate!



Holiday Inn - San Diego-On the Bay 1355 North Harbor Drive San Diego, CA 92101 619-232-3861-619-232-4924 Fax